



# What is expected from a PaaS in 2013?

2013-02-06

Matt Stephenson, Software Engineer, App Engine Java



Service as a Service

Platform as a Service

Infrastructure as a Service

Service as a Service

Platform as a Service

Infrastructure as a Service



Service as a Service

Platform as a Service

Infrastructure as a Service



Service as a Service

Platform as a Service

Infrastructure as a Service



Service as a Service

Platform as a Service

Data Storage

Caching

User Identification

Infrastructure as a Service



Service as a Service

Platform as a Service

Data Storage

Monitoring

Caching

Automatic Scaling

User Identification

Communication

Infrastructure as a Service





Service as a Service

Platform as a Service



Data Storage

Monitoring

Caching

Automatic Scaling

User Identification

Communication

Infrastructure as a Service



Service as a Service

Platform as a Service

The Hybrid Cloud

Abstracted Apis

Open Source SDKs

Choose your own cloud

Infrastructure as a Service



Service as a Service

Platform as a Service

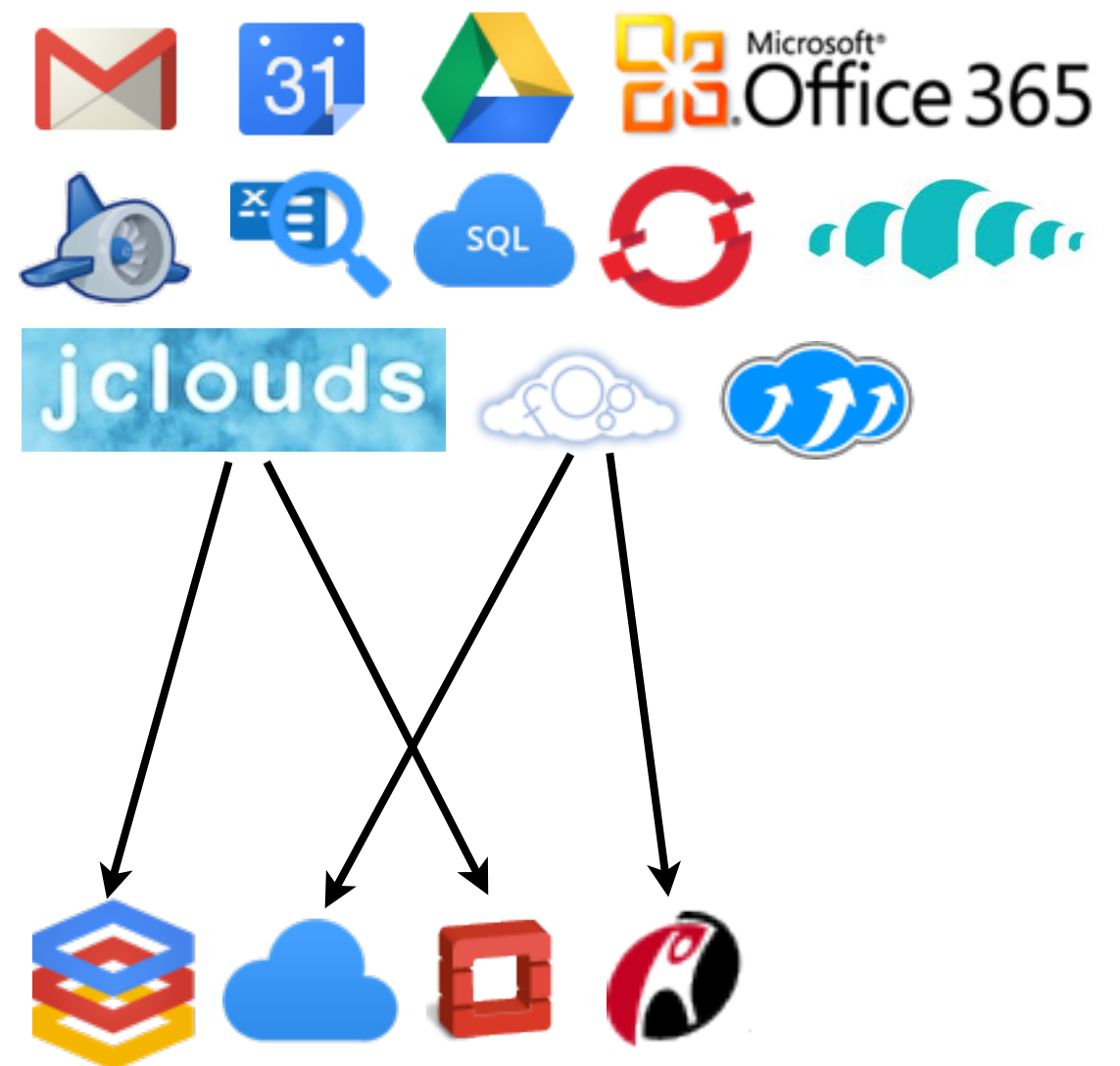
The Hybrid Cloud

Abstracted Apis

Open Source SDKs

Choose your own cloud

Infrastructure as a Service





# What matters the most in 2013?

## **U.S. Department of Energy Hacked**

Fourteen servers and 20 desktop computers were breached.

## U.S. Department of Energy Hacked

Fourteen servers and 20 desktop computers were breached.

## Twitter Currently Experiencing Widespread, Rolling Service Outage [Update: Resolved]

Thursday, January 31st, 2013

## Amazon apologizes for Netflix's Christmas Eve streaming outage

Amazon Web Services explains that the disruption occurred when data was accidentally deleted from the traffic apportion system.



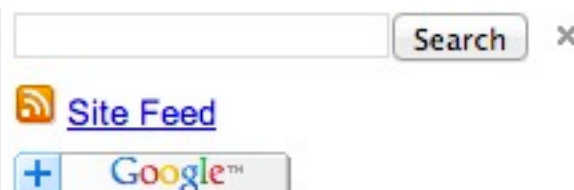
### Google App Engine Blog

News, notes, tips and tricks from the Google App Engine Team

Friday, October 26, 2012

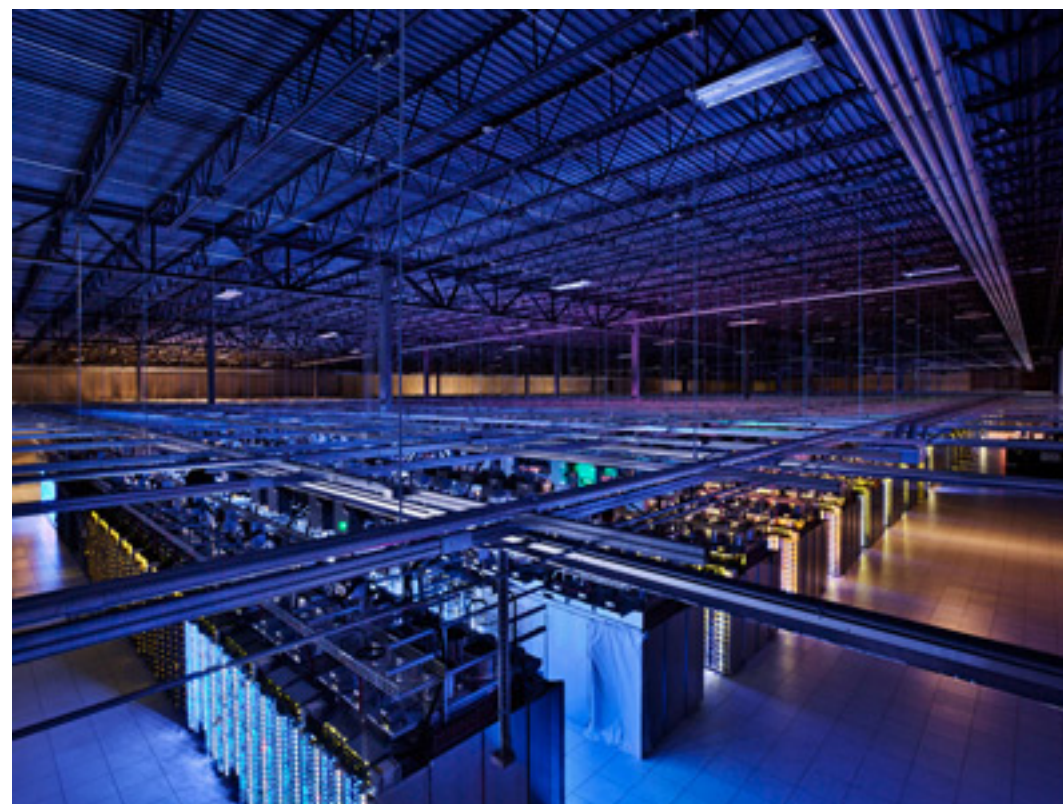
### About today's App Engine outage

*This morning we failed to live up to our promise, and Google App Engine applications experienced increased latencies and time-out errors.*





Scale is Evolving



User Experience Is Evolving



Automation is Evolving



Simplicity

Performance

Choice

Reliability





More Demos?

Q&A?

Your choice.