



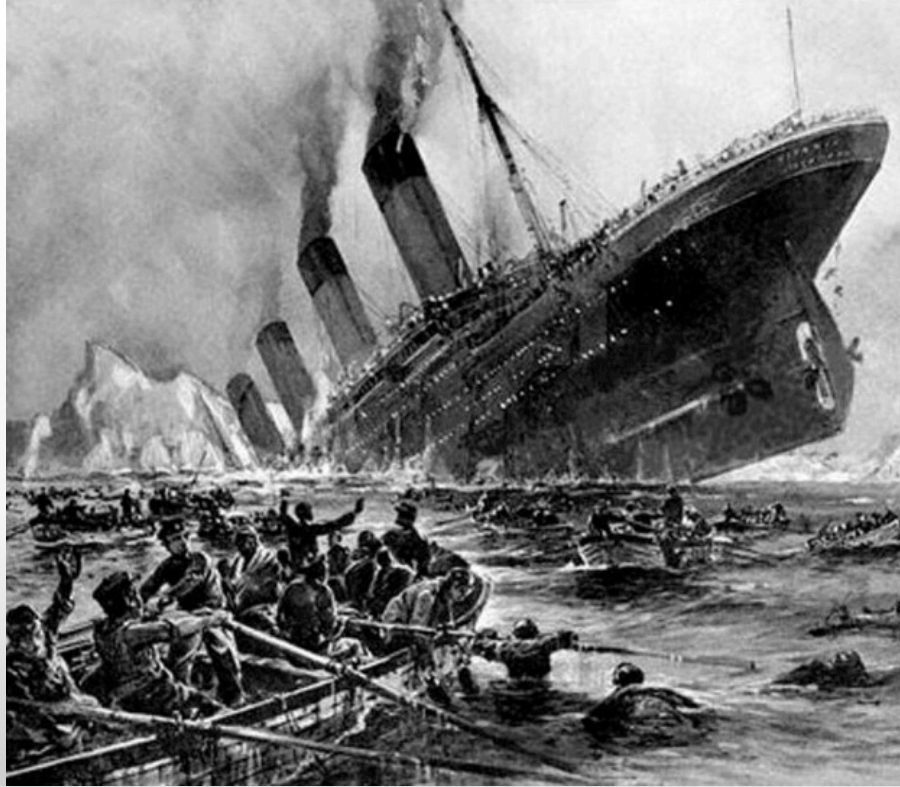
# Will it Float [in Java]

Stephen Chin (@steveonjava)

MAKE THE  
FUTURE  
JAVA

ORACLE®

# Will it Float?





# What Runs Java?

Example of devices powered by Java

## SMALL



- RFID Readers
- Parking Meters
- Intelligent Power Module
- Smart Meters

## MEDIUM



- Routers & Switches
- Storage Appliances
- Network Management Systems
- Factory Automation Systems
- Security Systems

## LARGE

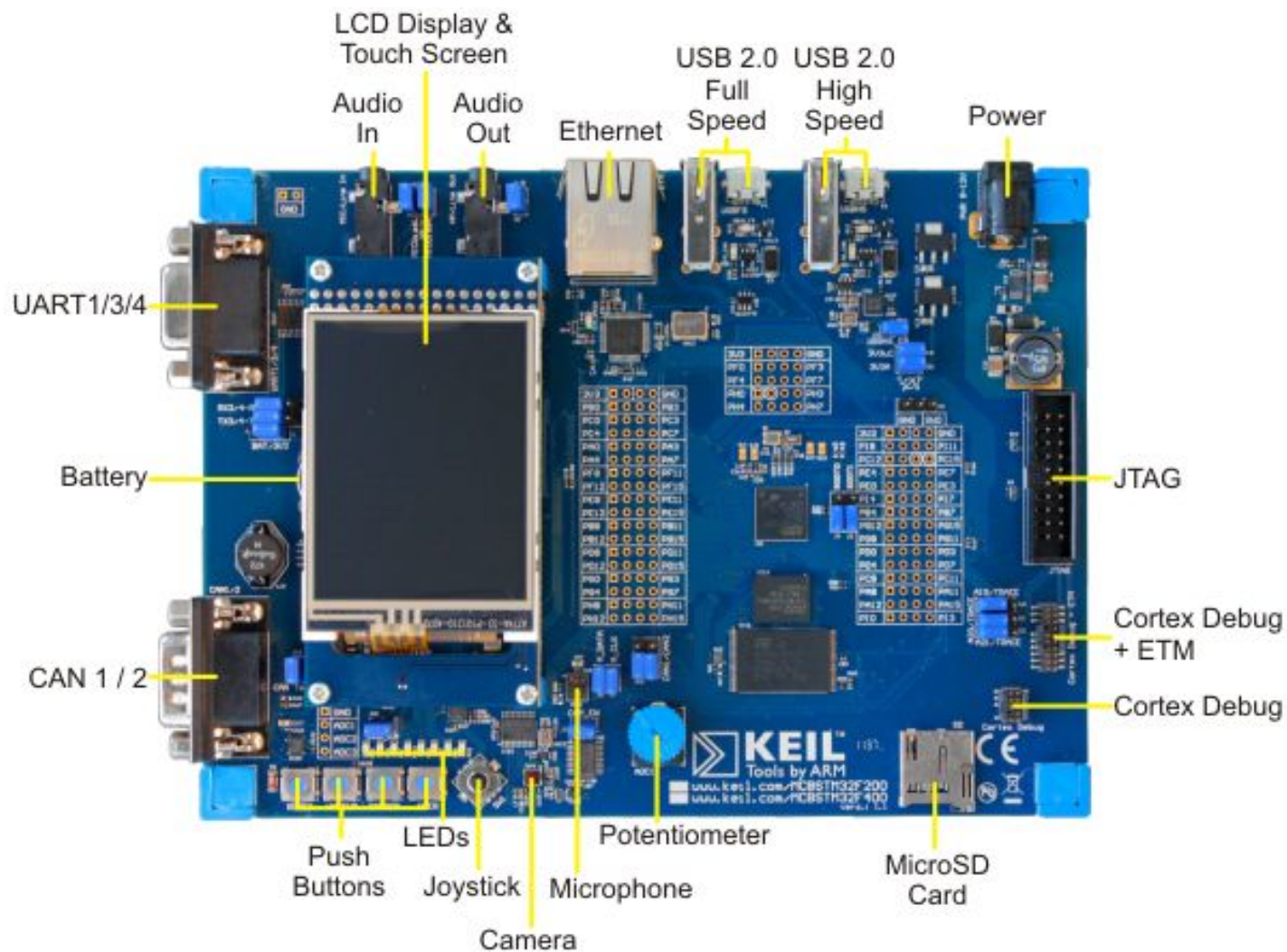


- Multi Function Printers
- ATMs
- POS Systems
- In-Flight Entertainment Systems
- Electronic Voting Systems
- Medical Imaging Systems

# ARM-powered

## Keil MCBSTM32F200



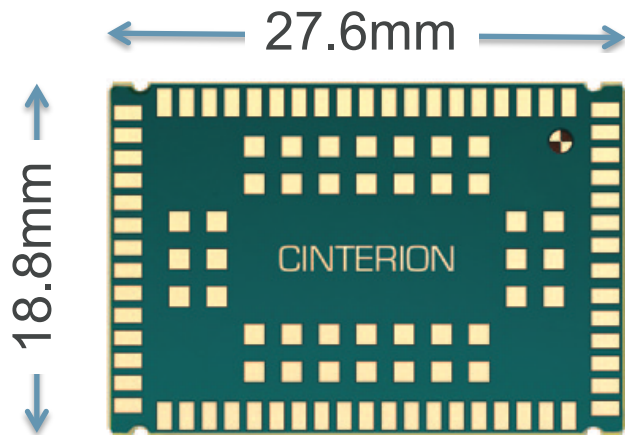


# Java and 3G in a Tiny Package

Cinterion EHS5



# Really Tiny...







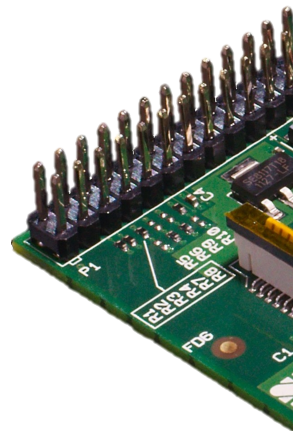


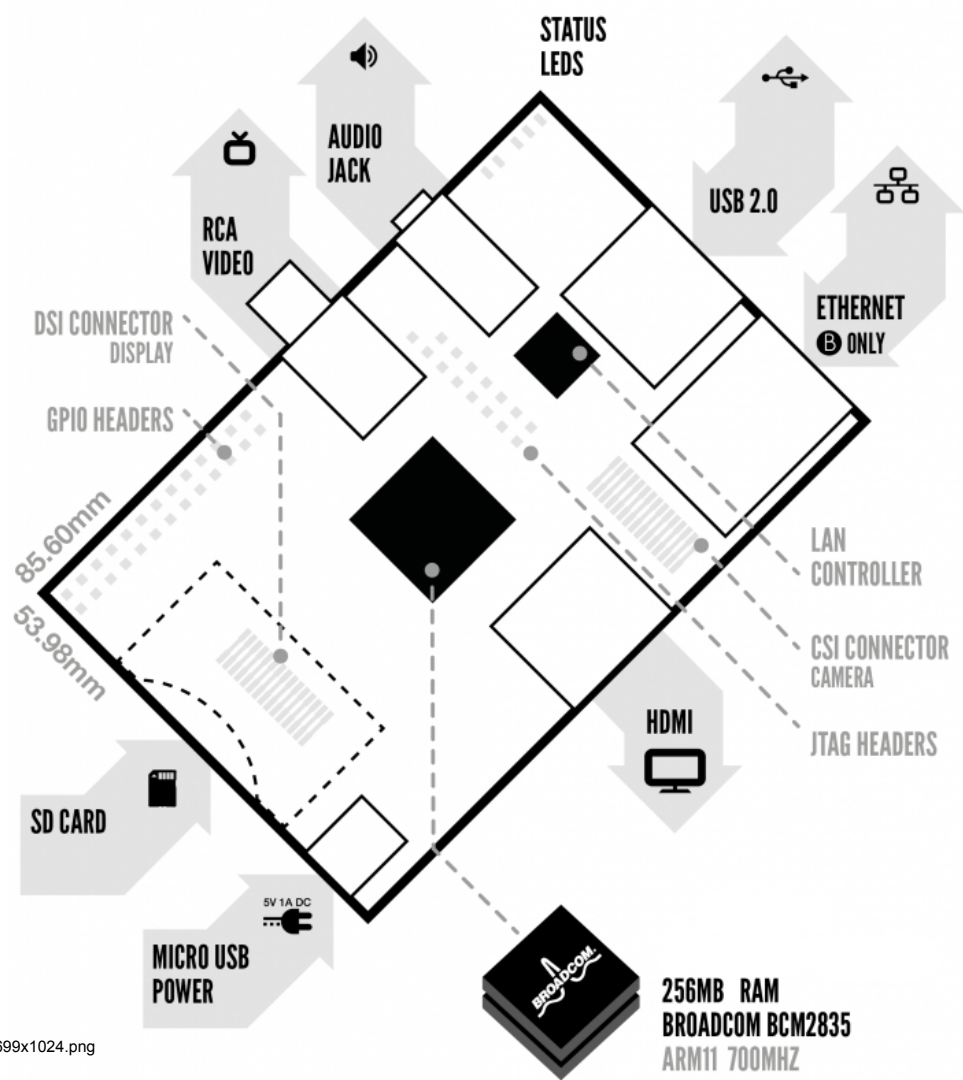
# Have Java With Your Dessert

Raspberry Pi



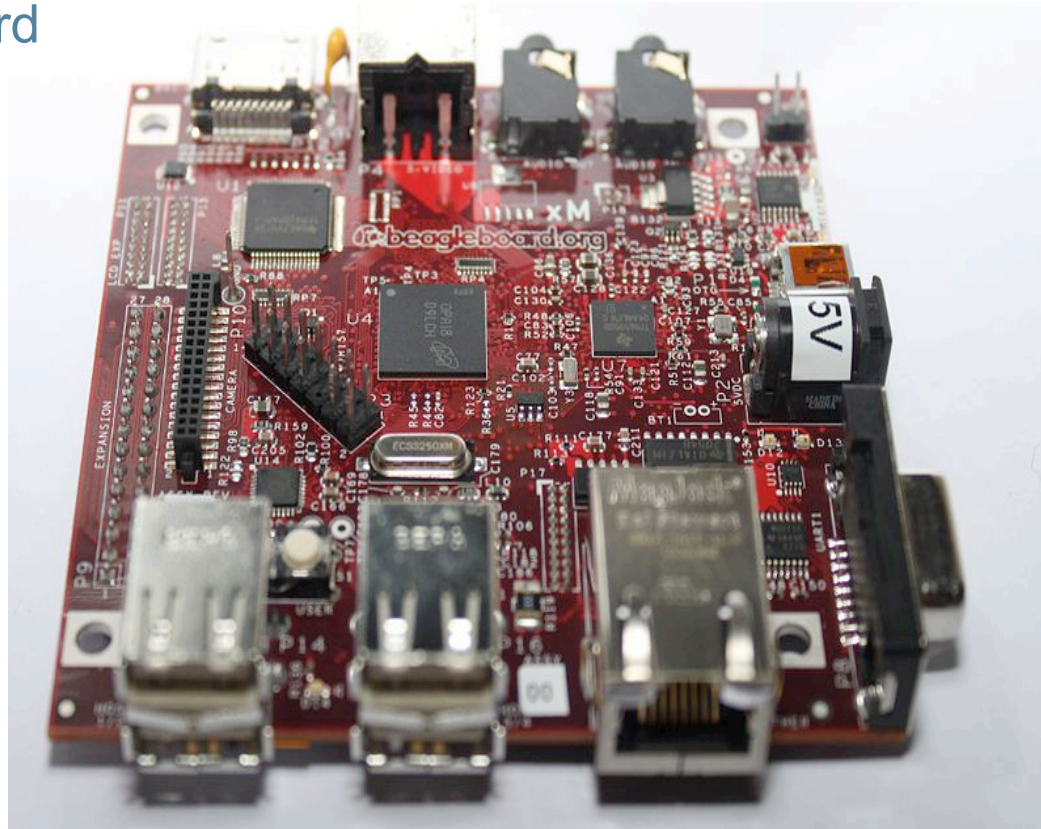
=





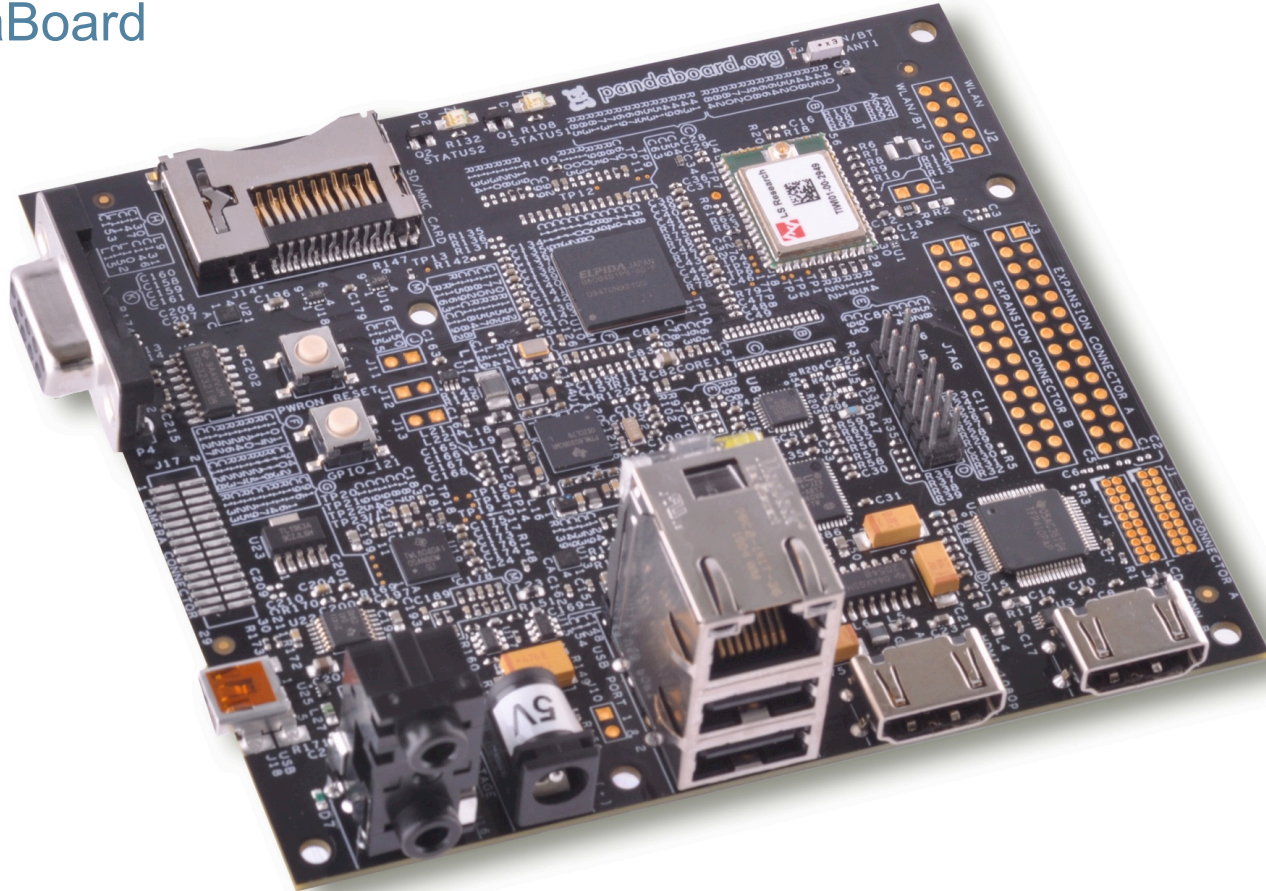
# + ARM v7 + PowerVR

BeagleBoard



# + Dual-Core + OMAP4

PandaBoard





# And you can do cool stuff like this...

<https://bitbucket.org/stephanj/tweetwall>

**13:30 - 16:30**  
Modular Java EE in the Cloud: A Practical Guide to Modularity in the Cloud Age.  
[Architecture, Cloud and Security]  
Bert Ertman  
Paul Bakker

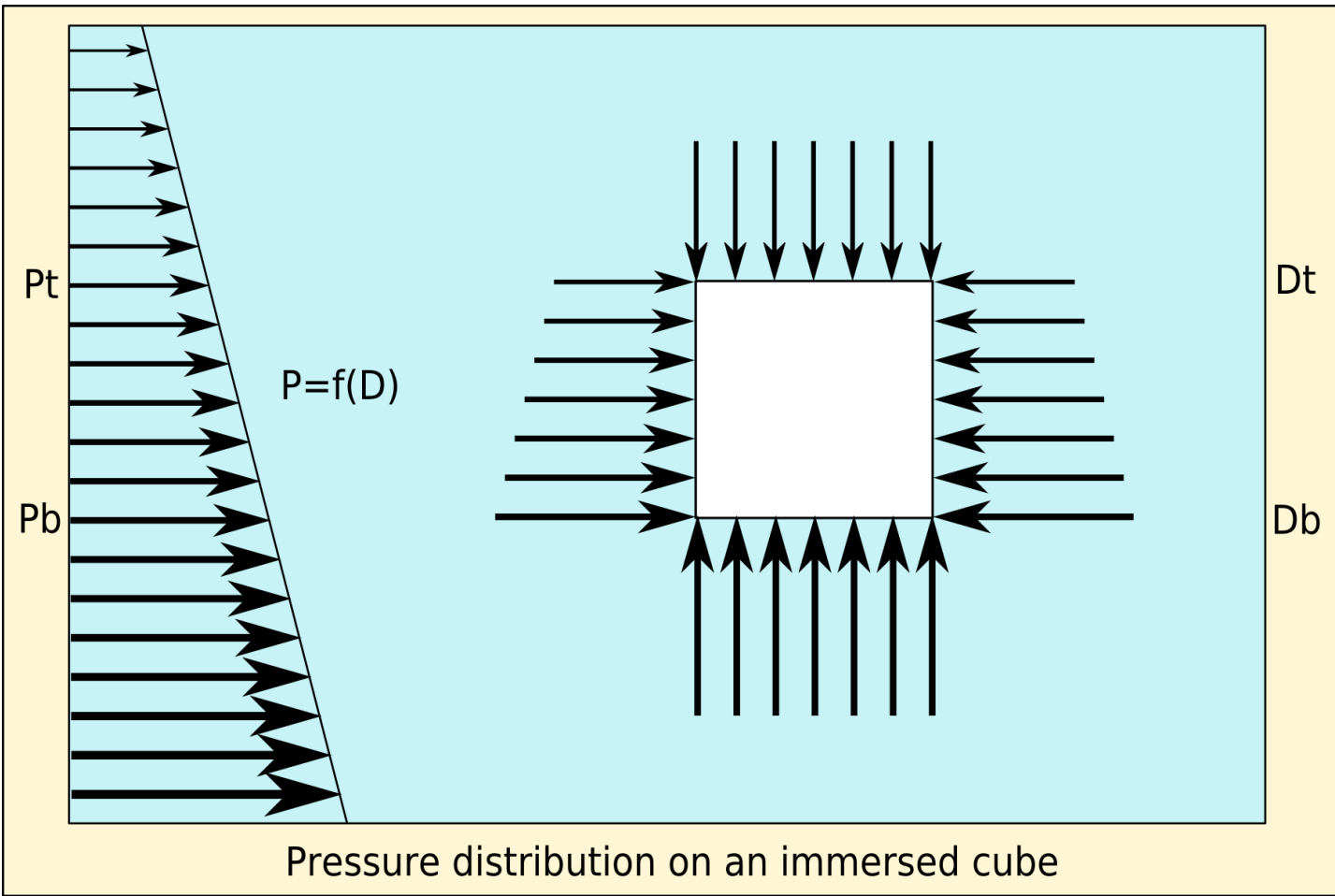
**16:45 - 17:15**  
Hacking the Java compiler for fun and profit  
[Java SE]  
Raoul-Gabriel Urma

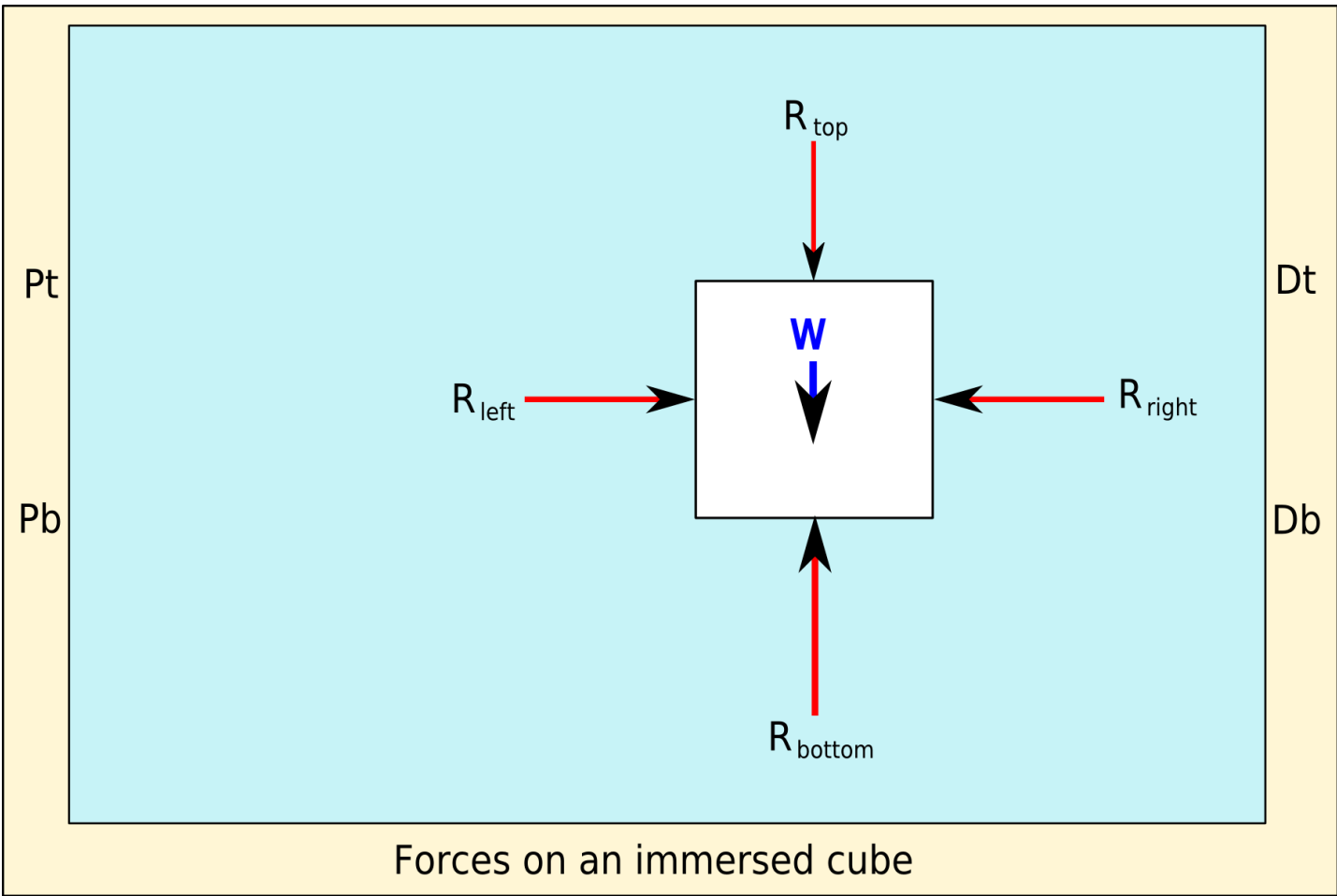
**09:30 - 12:30 | Play Framework - Crash Course**  
[Web][NOVICE]  
Play Framework, the popular Java and Scala web framework was launched only half a year ago but it's fair to say that it has taken the JVM web development community by storm. In this university session the Play core team will teach you how to get the best out of Play including a session about aReal world application development techniques and another that will introduce you to aRealtime Web Programming.  
Part 1) Play Development techniques in the Real World  
Part 2) Playframework: Real Time Web for the JVM  
Peter Hausel  
Sadek Drobi  
Guillaume Bort

# Will it Float?





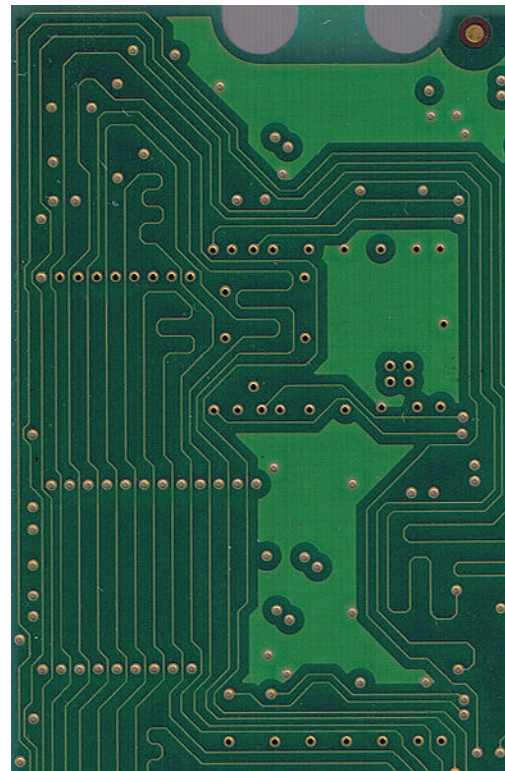




# Material Density

Specific gravity/density

- Air: 0.001225
- Water: 1
- FR-4: 1.85
- Silicon: 2.33
- Aluminum: 2.7
- Copper: 8.96



<http://commons.wikimedia.org/wiki/File:Pcb.jpg>

# Specific Gravity of Coffee



- **1.0058** Krups drip brewer with filter
- **1.0082** Brewed coffee at Peet's
- **1.0141** Nespresso capsule brew
- **1.0145** Victoria House concentrate
- **1.0189** Starbuck's, Los Altos
- **1.0173** Filtron cold-brewed conc.
- **1.0193** Solis automatic
- **1.0209** Ken Davids' Saeco Vienna
- **1.0233** An old Italian lever machine
- **1.0221** Rancillo booth at SCAA
- **1.0294** Pasquini Riviera machine
- **1.0298** Peet's, Palo Alto, California
- **1.0857** Cafe' Vivace, Seattle



# Conclusion (A)

- Java runs on devices of all sizes
- Full Java SE is available on ARM processors
- JavaFX gives you 3D accelerated mobile graphics

But sadly coffee doesn't give you these same benefits...



# Conclusion (B)

- Java runs on devices of all sizes
- Full Java SE is available on ARM processors
- JavaFX gives you 3D accelerated mobile graphics

And, you can float your hardware in coffee!<sup>1</sup>

1.  CAUTION: Don't try this while it is powered on



Stephen Chin

tweet: @steveonjava

blog: <http://steveonjava.com>

## NORDIC NIGHTHACKING TOUR



JAN 25 – FEB 7

[NIGHTHACKING.COM](http://NIGHTHACKING.COM)